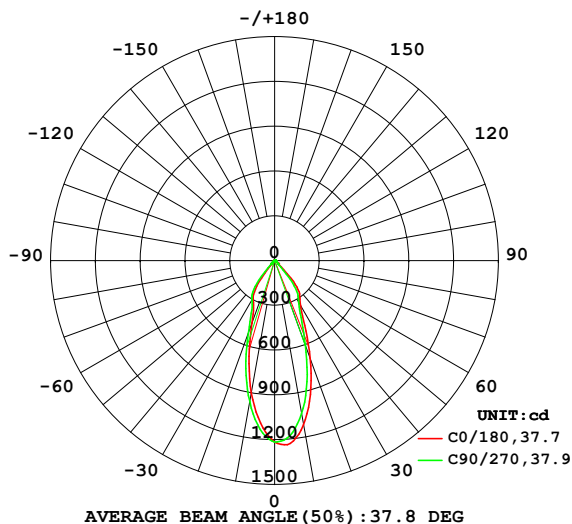


## LUMINAIRE PHOTOMETRIC TEST REPORT

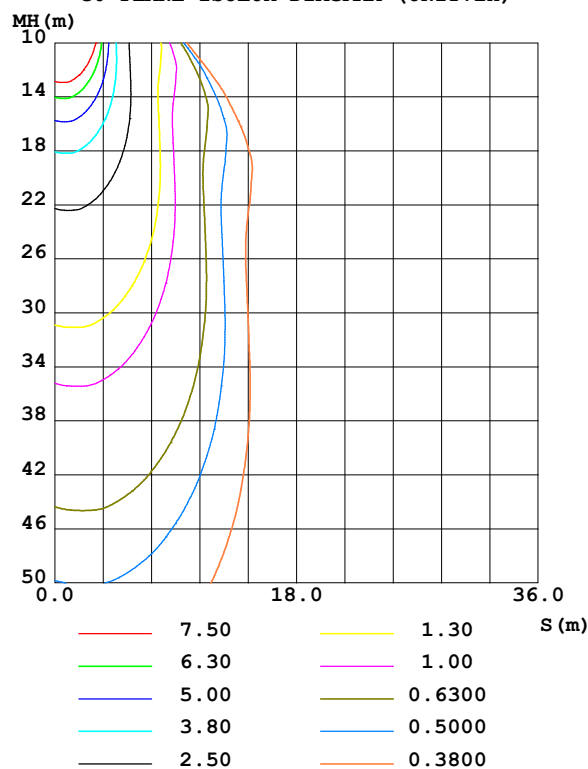
Test:U:220.53V I:0.0552A P:11.588W PF:0.9513 Freq:49.99Hz UTHDi:0.00% ITHDi:0.00% KDisp:0 Lamp Flux:743.065x1 lm		
NAME: DL3028 3000K 10W	TYPE:	WEIGHT:
SPEC.:	DIM.:	SERIAL No.:
MFR.: VJC Lighting	SUR.: 64	Shielding Angle:

DATA OF LAMP		PHOTOMETRIC DATA				Eff: 64.12 lm/W
MODEL	DL3028 3000K 10W	I <sub>max</sub> (cd)	1239	S/MH(C0/180)	0.53	
NOMINAL POWER(W)	10	LOR(%)	100.0	S/MH(C90/270)	0.59	
RATED VOLTAGE(V)	220	TOTAL FLUX(lm)	743.06	η UP,DN(C0-180)	0.3,52.6	
NOMINAL FLUX(lm)	743.065	CIE CLASS	DIRECT	η UP,DN(C180-360)	0.4,46.6	
LAMPS INSIDE	1	η up (%)	0.7	CIBSE SHR NOM	0.50	
TEST VOLTAGE(V)	220	η down (%)	99.3	CIBSE SHR MAX	0.55	

LUMINOUS INTENSITY DISTRIBUTION DIAGRAM



C0 PLANE ISOLUX DIAGRAM (UNIT:lx)



C Range: 0 - 360DEG  
C Interval: 22.5DEG  
Test Speed: HIGH  
Temperature:25.3℃  
Operators:Lihong yun  
Test Date:2023-02-08

γ Range: 0 - 180DEG  
γ Interval: 1.0DEG  
Test System:EVERFINE GO-2000B\_V1 SYSTEM V2.00.456  
Humidity:65.0%  
Test Distance:7.580m [K=1.0000]  
Remarks:

## ZONAL FLUX DIAGRAM

## ZONAL FLUX DIAGRAM:

$\gamma$	C0	C45	C90	C135	C180	C225	C270	C315	$\gamma$	$\Phi$ zone	$\Phi$ total	%lum, lamp
10	1117	1109	1042	959.3	901.1	905.7	961.7	1049	0- 10	105.5	105.5	14.2,14.2
20	699.2	691.5	604.1	504.0	447.7	452.7	518.3	621.7	10- 20	217.7	323.2	43.5,43.5
30	347.8	346.7	324.1	300.5	288.6	291.9	305.6	324.4	20- 30	188.5	511.7	68.9,68.9
40	234.1	213.7	161.1	77.16	49.07	66.02	137.3	203.9	30- 40	153.8	665.5	89.6,89.6
50	33.71	26.09	30.61	18.41	17.04	19.12	29.55	26.31	40- 50	45.18	710.7	95.6,95.6
60	13.75	13.26	11.45	9.913	9.132	9.958	11.20	12.96	50- 60	15.87	726.5	97.8,97.8
70	7.432	5.787	5.087	2.740	2.484	2.625	3.139	5.208	60- 70	8.049	734.6	98.9,98.9
80	1.464	1.309	1.493	1.214	0.9225	1.007	1.304	1.401	70- 80	2.483	737.1	99.2,99.2
90	0.0513	0.0545	0.0529	0.0600	0.0356	0.0429	0.0845	0.0806	80- 90	0.5218	737.6	99.3,99.3
100	0.0357	0.0271	0.0434	0.0369	0.0647	0.0700	0.0618	0.0438	90-100	0.0560	737.7	99.3,99.3
110	0.0534	0.0676	0.0889	0.1036	0.2476	0.2395	0.2195	0.1523	100-110	0.0898	737.7	99.3,99.3
120	0.2114	0.2345	0.2919	0.3316	0.5841	0.5715	0.5232	0.4176	110-120	0.2554	738.0	99.3,99.3
130	0.5075	0.5322	0.6159	0.6978	1.182	1.161	1.051	0.8906	120-130	0.5271	738.5	99.4,99.4
140	1.008	1.037	1.143	1.299	2.048	2.023	1.873	1.670	130-140	0.8839	739.4	99.5,99.5
150	1.746	1.764	1.933	2.088	2.906	2.860	2.745	2.546	140-150	1.193	740.6	99.7,99.7
160	2.519	2.563	2.716	2.862	3.436	3.406	3.327	3.186	150-160	1.229	741.8	99.8,99.8
170	3.105	3.150	3.235	3.271	3.518	3.507	3.475	3.471	160-170	0.9065	742.7	100,100
180	3.460	3.498	3.454	3.494	3.500	3.514	3.484	3.508	170-180	0.3248	743.1	100,100
DEG	LUMINOUS INTENSITY:cd									UNIT:lm		

Conical surface Flux(90deg): 697.85 lm

%lum = 93.9%

%lamp = 93.9%

Conical surface Flux(130deg): 731.34 lm

%lum = 98.4%

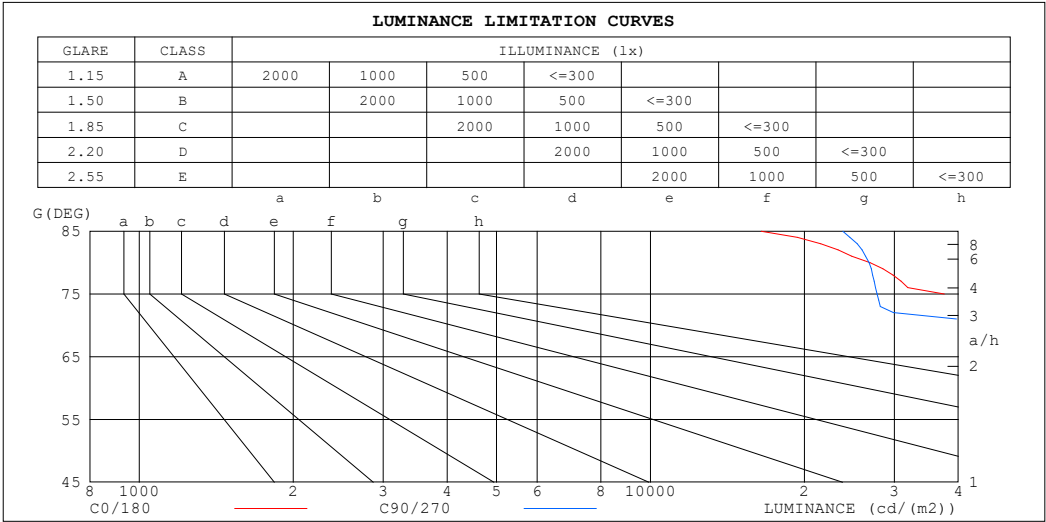
%lamp = 98.4%

C Range: 0 - 360DEG  
 C Interval: 22.5DEG  
 Test Speed: HIGH  
 Temperature:25.3℃  
 Operators:Lihong yun  
 Test Date:2023-02-08

$\gamma$  Range: 0 - 180DEG  
 $\gamma$  Interval: 1.0DEG  
 Test System:EVERFINE GO-2000B\_V1 SYSTEM V2.00.456  
 Humidity:65.0%  
 Test Distance:7.580m [K=1.0000]  
 Remarks:

LUMINANCE LIMITATION CURVES

Test:U:220.53V I:0.0552A P:11.588W PF:0.9513 Freq:49.99Hz		
UTHDi:0.00% ITHDi:0.00% KDisp:0 Lamp Flux:743.065x1 lm		
NAME: DL3028 3000K 10W	TYPE:	WEIGHT:
SPEC.:	DIM.:	SERIAL No.:
MFR.: VJC Lighting	SUR.: 64	Shielding Angle:



LUMINANCE cd/(m2)		
G (DEG)	C0/180	C90/270
85	16473	23799
80	26897	26758
75	37592	27759
70	69323	46302
65	78105	62670
60	87744	71317
55	138027	96954
50	167291	148250
45	391327	161470

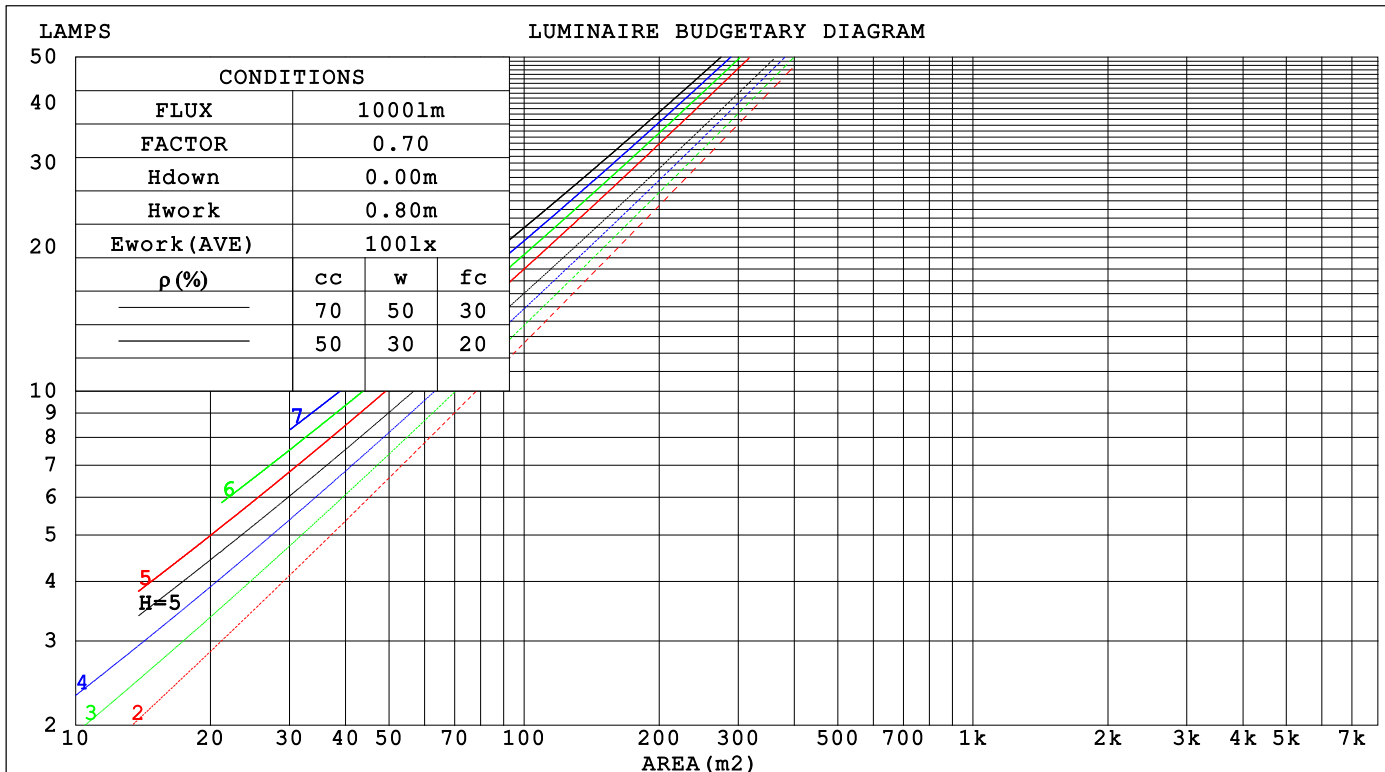
C Range: 0 - 360DEG  
C Interval: 22.5DEG  
Test Speed: HIGH  
Temperature:25.3℃  
Operators:Lihong yun  
Test Date:2023-02-08

γ Range: 0 - 180DEG  
γ Interval: 1.0DEG  
Test System:EVERFINE GO-2000B\_V1 SYSTEM V2.00.456  
Humidity:65.0%  
Test Distance:7.580m [K=1.0000]  
Remarks:

## CU AND LUMINAIRE BUDGETARY ESTIMATE DIAGRAM

Test:U:220.53V I:0.0552A P:11.588W PF:0.9513 Freq:49.99Hz		
UTHDi:0.00% ITHDi:0.00% KDisp:0 Lamp Flux:743.065x1 lm		
NAME: DL3028 3000K 10W	TYPE:	WEIGHT:
SPEC.:	DIM.:	SERIAL No.:
MFR.: VJC Lighting	SUR.: 64	Shielding Angle:

pcc	80%			70%			50%			30%			10%			0
pw	50%	30%	10%	50%	30%	10%	50%	30%	10%	50%	30%	10%	50%	30%	10%	0
pfc	20%			20%			20%			20%			20%			0
RCR	RCR:Room Cavity Ratio                      Coefficients of Utilization(CU)															
0.0	1.19	1.19	1.19	1.16	1.16	1.16	1.11	1.11	1.11	1.06	1.06	1.06	1.01	1.01	1.01	.99
1.0	1.10	1.08	1.06	1.08	1.06	1.04	1.04	1.02	1.01	1.00	.99	.98	.97	.96	.95	.93
2.0	1.03	.99	.95	1.01	.97	.94	.98	.95	.92	.95	.92	.90	.92	.90	.88	.86
3.0	.96	.91	.87	.94	.90	.86	.92	.88	.85	.89	.86	.83	.87	.84	.82	.80
4.0	.90	.84	.80	.88	.83	.79	.86	.82	.78	.84	.80	.77	.82	.79	.76	.75
5.0	.84	.78	.74	.83	.78	.74	.81	.77	.73	.79	.75	.72	.78	.74	.71	.70
6.0	.79	.73	.69	.78	.73	.69	.77	.72	.68	.75	.71	.68	.74	.70	.67	.66
7.0	.75	.69	.64	.74	.68	.64	.73	.68	.64	.71	.67	.63	.70	.66	.63	.62
8.0	.70	.65	.61	.70	.64	.60	.69	.64	.60	.68	.63	.60	.67	.63	.59	.58
9.0	.67	.61	.57	.66	.61	.57	.65	.60	.57	.64	.60	.56	.63	.59	.56	.55
10.0	.63	.58	.54	.63	.58	.54	.62	.57	.54	.61	.57	.53	.61	.56	.53	.52



C Range: 0 - 360DEG  
C Interval: 22.5DEG  
Test Speed: HIGH  
Temperature:25.3℃  
Operators:Lihong yun  
Test Date:2023-02-08

γ Range: 0 - 180DEG  
γ Interval: 1.0DEG  
Test System:EVERFINE GO-2000B\_V1 SYSTEM V2.00.456  
Humidity:65.0%  
Test Distance:7.580m [K=1.0000]  
Remarks:

### WEC AND CCEC

Test:U:220.53V I:0.0552A P:11.588W PF:0.9513 Freq:49.99Hz			UTHDi:0.00% ITHDi:0.00% KDisp:0			Lamp Flux:743.065x1 lm		
NAME: DL3028 3000K 10W			TYPE:			WEIGHT:		
SPEC.:			DIM.:			SERIAL No.:		
MFR.: VJC Lighting			SUR.: 64			Shielding Angle:		

pcc	80%			70%			50%			30%			10%			0	
pw	50%	30%	10%	50%	30%	10%	50%	30%	10%	50%	30%	10%	50%	30%	10%	0	
pfc	20%			20%			20%			20%			20%			0	
RCR	RCR:Room Cavity Ratio						Wall Exitance Coefficients(WEC)										
0.0																	
1.0	.180	.102	.032	.173	.098	.031	.160	.092	.029	.148	.085	.027	.137	.079	.026		
2.0	.172	.094	.029	.166	.091	.028	.155	.086	.027	.145	.081	.025	.135	.077	.024		
3.0	.163	.087	.026	.158	.085	.026	.149	.081	.025	.140	.077	.024	.132	.073	.023		
4.0	.155	.081	.024	.151	.079	.023	.143	.076	.023	.135	.073	.022	.128	.070	.021		
5.0	.147	.075	.022	.144	.074	.021	.137	.071	.021	.130	.069	.020	.124	.066	.020		
6.0	.140	.070	.020	.137	.069	.020	.131	.067	.019	.125	.065	.019	.119	.063	.019		
7.0	.134	.066	.019	.131	.065	.019	.125	.063	.018	.120	.062	.018	.115	.060	.018		
8.0	.128	.062	.018	.125	.062	.017	.120	.060	.017	.115	.058	.017	.111	.057	.017		
9.0	.122	.059	.016	.120	.058	.016	.115	.057	.016	.111	.056	.016	.107	.054	.016		
10.0	.117	.056	.016	.115	.055	.015	.111	.054	.015	.107	.053	.015	.103	.052	.015		

pcc	80%			70%			50%			30%			10%			0	
pw	50%	30%	10%	50%	30%	10%	50%	30%	10%	50%	30%	10%	50%	30%	10%	0	
pfc	20%			20%			20%			20%			20%			0	
RCR	RCR:Room Cavity Ratio						Ceiling Cavity Exitance Coefficients (CCEC)										
0.0	.196	.196	.196	.168	.168	.168	.114	.114	.114	.066	.066	.066	.021	.021	.021		
1.0	.177	.163	.150	.151	.140	.129	.104	.096	.089	.060	.056	.052	.019	.018	.017		
2.0	.162	.138	.118	.139	.119	.102	.095	.082	.071	.055	.048	.042	.018	.015	.014		
3.0	.150	.119	.095	.128	.103	.082	.088	.071	.058	.051	.042	.034	.016	.014	.011		
4.0	.139	.105	.078	.120	.090	.068	.082	.063	.048	.048	.037	.028	.015	.012	.009		
5.0	.131	.093	.065	.112	.081	.057	.077	.056	.040	.045	.033	.024	.014	.011	.008		
6.0	.123	.084	.055	.106	.073	.048	.073	.051	.034	.042	.030	.020	.014	.010	.007		
7.0	.117	.076	.048	.100	.066	.042	.069	.046	.030	.040	.027	.018	.013	.009	.006		
8.0	.111	.070	.042	.095	.061	.037	.066	.043	.026	.038	.025	.015	.012	.008	.005		
9.0	.106	.065	.037	.091	.056	.032	.063	.040	.023	.037	.023	.014	.012	.008	.005		
10.0	.101	.060	.033	.087	.052	.029	.060	.037	.021	.035	.022	.012	.011	.007	.004		

C Range: 0 - 360DEG  
C Interval: 22.5DEG  
Test Speed: HIGH  
Temperature:25.3℃  
Operators:Lihong yun  
Test Date:2023-02-08

γ Range: 0 - 180DEG  
γ Interval: 1.0DEG  
Test System:EVERFINE GO-2000B\_V1 SYSTEM V2.00.456  
Humidity:65.0%  
Test Distance:7.580m [K=1.0000]  
Remarks:

### UGR(Unified Glare Rating) Table

Test:U:220.53V I:0.0552A P:11.588W PF:0.9513 Freq:49.99Hz UTHDi:0.00% ITHDi:0.00% KDisp:0 Lamp Flux:743.065x1 lm										
NAME: DL3028 3000K 10W					TYPE:			WEIGHT:		
SPEC.:					DIM.:			SERIAL No.:		
MFR.: VJC Lighting					SUR.: 64			Shielding Angle:		
ceiling/cavity	0.7	0.7	0.5	0.5	0.3	0.7	0.7	0.5	0.5	0.3
walls	0.5	0.3	0.5	0.3	0.3	0.5	0.3	0.5	0.3	0.3
working plane	0.2	0.2	0.2	0.2	0.2	0.2	0.2	0.2	0.2	0.2
Room dimensions	Viewed crosswise					Viewed endwise				
x = 2H y = 2H	31.0	32.0	31.3	32.2	32.3	29.7	30.7	30.0	30.9	31.0
3H	31.0	31.8	31.3	32.1	32.3	29.7	30.6	30.0	30.8	31.0
4H	30.9	31.7	31.2	32.0	32.2	29.6	30.4	29.9	30.7	30.9
6H	30.8	31.6	31.2	31.9	32.1	29.6	30.3	29.9	30.6	30.8
8H	30.8	31.5	31.1	31.8	32.1	29.5	30.3	29.8	30.5	30.8
12H	30.8	31.5	31.1	31.7	32.0	29.5	30.2	29.8	30.5	30.8
4H 2H	30.8	31.7	31.1	31.9	32.1	29.6	30.4	29.9	30.6	30.9
3H	30.8	31.5	31.1	31.8	32.1	29.6	30.3	29.9	30.6	30.9
4H	30.8	31.4	31.1	31.7	32.0	29.5	30.2	29.9	30.5	30.8
6H	30.7	31.2	31.1	31.6	32.0	29.4	30.0	29.8	30.4	30.7
8H	30.6	31.2	31.0	31.5	31.9	29.4	29.9	29.8	30.3	30.7
12H	30.6	31.1	31.0	31.4	31.9	29.4	29.8	29.8	30.2	30.6
8H 4H	30.6	31.1	31.0	31.5	31.9	29.4	29.9	29.8	30.3	30.7
6H	30.5	31.0	31.0	31.4	31.8	29.3	29.8	29.8	30.2	30.6
8H	30.5	30.9	31.0	31.3	31.8	29.3	29.7	29.8	30.1	30.6
12H	30.5	30.8	30.9	31.2	31.7	29.3	29.6	29.7	30.0	30.5
12H 4H	30.6	31.1	31.0	31.4	31.8	29.3	29.8	29.8	30.2	30.6
6H	30.5	30.9	31.0	31.3	31.8	29.3	29.7	29.7	30.1	30.5
8H	30.5	30.8	30.9	31.2	31.7	29.3	29.6	29.7	30.0	30.5
Variations with the observer position at spacings(CIE Pub.117):										
S = 1.0H	+ 2.3 / - 6.8					+ 2.4 / - 6.8				
1.5H	+ 4.6 / - 6.2					+ 4.7 / - 5.3				
2.0H	+ 5.6 / - 2.7					+ 2.0 / - 1.9				

CIE Pub.117, 743.1 lm Total Lamp Luminous Flux Correct (8log(F/F0) = -1.0)  
Area: 0.00032 m2

C Range: 0 - 360DEG  
C Interval: 22.5DEG  
Test Speed: HIGH  
Temperature:25.3℃  
Operators:Lihong yun  
Test Date:2023-02-08

γ Range: 0 - 180DEG  
γ Interval: 1.0DEG  
Test System:EVERFINE GO-2000B\_V1 SYSTEM V2.00.456  
Humidity:65.0%  
Test Distance:7.580m [K=1.0000]  
Remarks:

## UTILIZATION FACTORS TABLE

Test:U:220.53V I:0.0552A P:11.588W PF:0.9513 Freq:49.99Hz UTHDi:0.00% ITHDi:0.00% KDisp:0 Lamp Flux:743.065x1 lm		
NAME: DL3028 3000K 10W	TYPE:	WEIGHT:
SPEC.:	DIM.:	SERIAL No.:
MFR.: VJC Lighting	SUR.: 64	Shielding Angle:

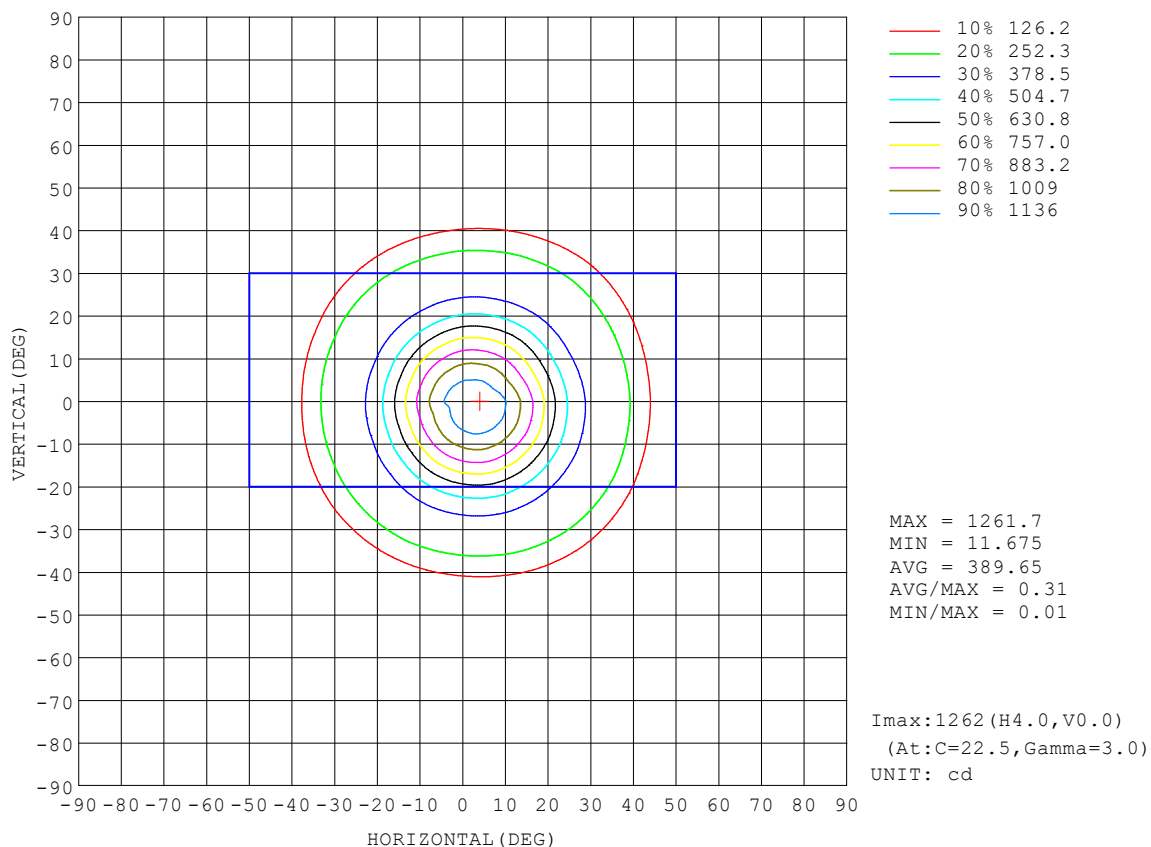
REFLECTANCE										
Ceiling	0.8	0.8	0.8	0.7	0.7	0.7	0.5	0.5	0.5	0
Walls	0.7	0.5	0.3	0.7	0.5	0.3	0.7	0.5	0.3	0
Working plane	0.2	0.2	0.2	0.2	0.2	0.2	0.2	0.2	0.2	0
ROOM INDEX	UTILIZATION FACTORS (PERCENT) $k(RI) \times RCR = 5$									
$k = 0.60$	85	78	74	84	78	74	84	78	74	70
0.80	93	86	83	92	86	82	91	85	82	78
1.00	98	92	88	97	91	87	95	91	87	83
1.25	102	96	93	101	96	92	99	94	91	87
1.50	105	100	96	103	99	96	101	97	94	90
2.00	108	103	100	106	102	99	103	100	97	92
2.50	109	105	102	108	104	101	104	102	99	93
3.00	111	107	105	109	106	103	106	103	101	94
4.00	113	110	108	111	109	106	107	105	104	96
5.00	114	112	110	112	110	108	108	107	105	97
ROOM INDEX	UF (total)									Direct
According to DIN EN 13032-2 2004			Suspended					SHRNOM = 1.25		

C Range: 0 - 360DEG  
 C Interval: 22.5DEG  
 Test Speed: HIGH  
 Temperature: 25.3℃  
 Operators: Lihong yun  
 Test Date: 2023-02-08

γ Range: 0 - 180DEG  
 γ Interval: 1.0DEG  
 Test System: EVERFINE GO-2000B\_V1 SYSTEM V2.00.456  
 Humidity: 65.0%  
 Test Distance: 7.580m [K=1.0000]  
 Remarks:

## ISOCANDELA DIAGRAM

Test:U:220.53V I:0.0552A P:11.588W PF:0.9513 Freq:49.99Hz UTHDi:0.00% ITHDi:0.00% KDisp:0 Lamp Flux:743.065x1 lm		
NAME: DL3028 3000K 10W	TYPE:	WEIGHT:
SPEC.:	DIM.:	SERIAL No.:
MFR.: VJC Lighting	SUR.: 64	Shielding Angle:



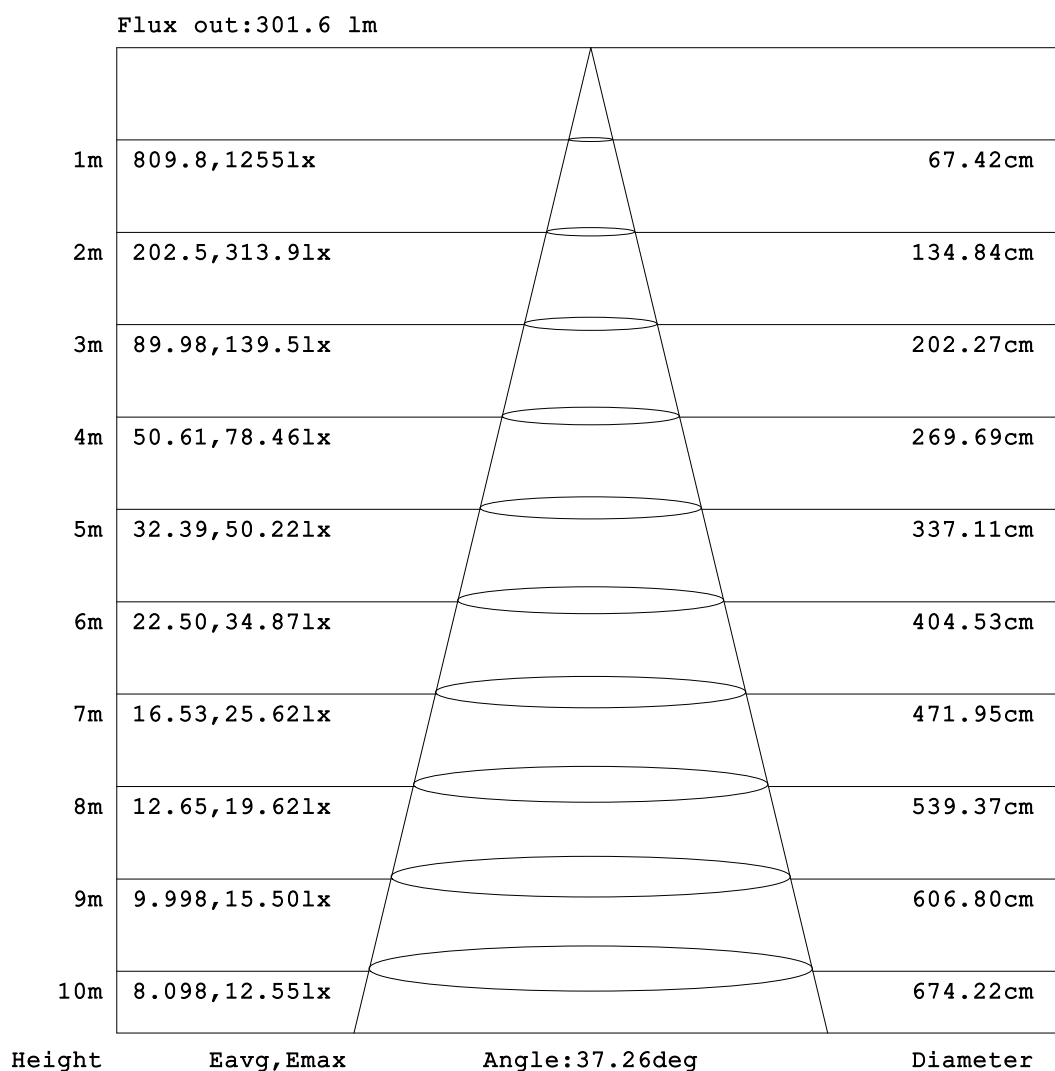
C Range: 0 - 360DEG  
C Interval: 22.5DEG  
Test Speed: HIGH  
Temperature: 25.3°C  
Operators: Lihong yun  
Test Date: 2023-02-08

γ Range: 0 - 180DEG  
γ Interval: 1.0DEG  
Test System: EVERFINE GO-2000B\_V1 SYSTEM V2.00.456  
Humidity: 65.0%  
Test Distance: 7.580m [K=1.0000]  
Remarks:



### AAI Figure

Test:U:220.53V I:0.0552A P:11.588W PF:0.9513 Freq:49.99Hz UTHDi:0.00% ITHDi:0.00% KDisp:0 Lamp Flux:743.065x1 lm		
NAME: DL3028 3000K 10W	TYPE:	WEIGHT:
SPEC.:	DIM.:	SERIAL No.:
MFR.: VJC Lighting	SUR.: 64	Shielding Angle:



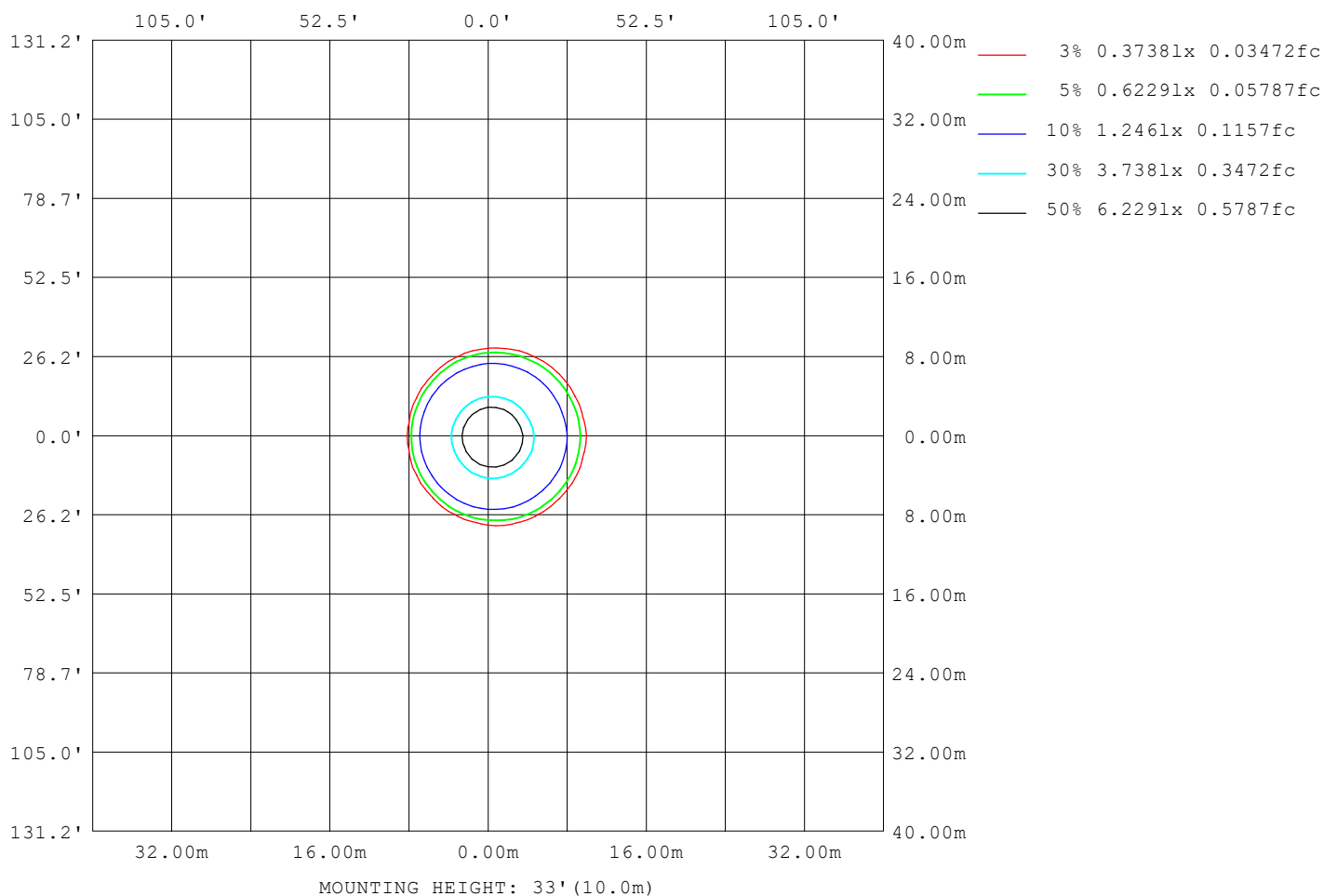
Note:The Curves indicate the illuminated area and the average illumination when the luminaire is at different distance.

C Range: 0 - 360DEG  
C Interval: 22.5DEG  
Test Speed: HIGH  
Temperature:25.3℃  
Operators:Lihong yun  
Test Date:2023-02-08

γ Range: 0 - 180DEG  
γ Interval: 1.0DEG  
Test System:EVERFINE GO-2000B\_V1 SYSTEM V2.00.456  
Humidity:65.0%  
Test Distance:7.580m [K=1.0000]  
Remarks:

## ISOLUX DIAGRAM

Test:U:220.53V I:0.0552A P:11.588W PF:0.9513 Freq:49.99Hz UTHDi:0.00% ITHDi:0.00% KDisp:0 Lamp Flux:743.065x1 lm		
NAME: DL3028 3000K 10W	TYPE:	WEIGHT:
SPEC.:	DIM.:	SERIAL No.:
MFR.: VJC Lighting	SUR.: 64	Shielding Angle:



C Range: 0 - 360DEG  
C Interval: 22.5DEG  
Test Speed: HIGH  
Temperature: 25.3°C  
Operators: Lihong yun  
Test Date: 2023-02-08

γ Range: 0 - 180DEG  
γ Interval: 1.0DEG  
Test System: EVERFINE GO-2000B\_V1 SYSTEM V2.00.456  
Humidity: 65.0%  
Test Distance: 7.580m [K=1.0000]  
Remarks:

## LED Avg.L Report

Test:U:220.53V I:0.0552A P:11.588W PF:0.9513 Freq:49.99Hz UTHDi:0.00% ITHDi:0.00% KDisp:0 Lamp Flux:743.065x1 lm		
NAME: DL3028 3000K 10W	TYPE:	WEIGHT:
SPEC.:	DIM.:	SERIAL No.:
MFR.: VJC Lighting	SUR.: 64	Shielding Angle:

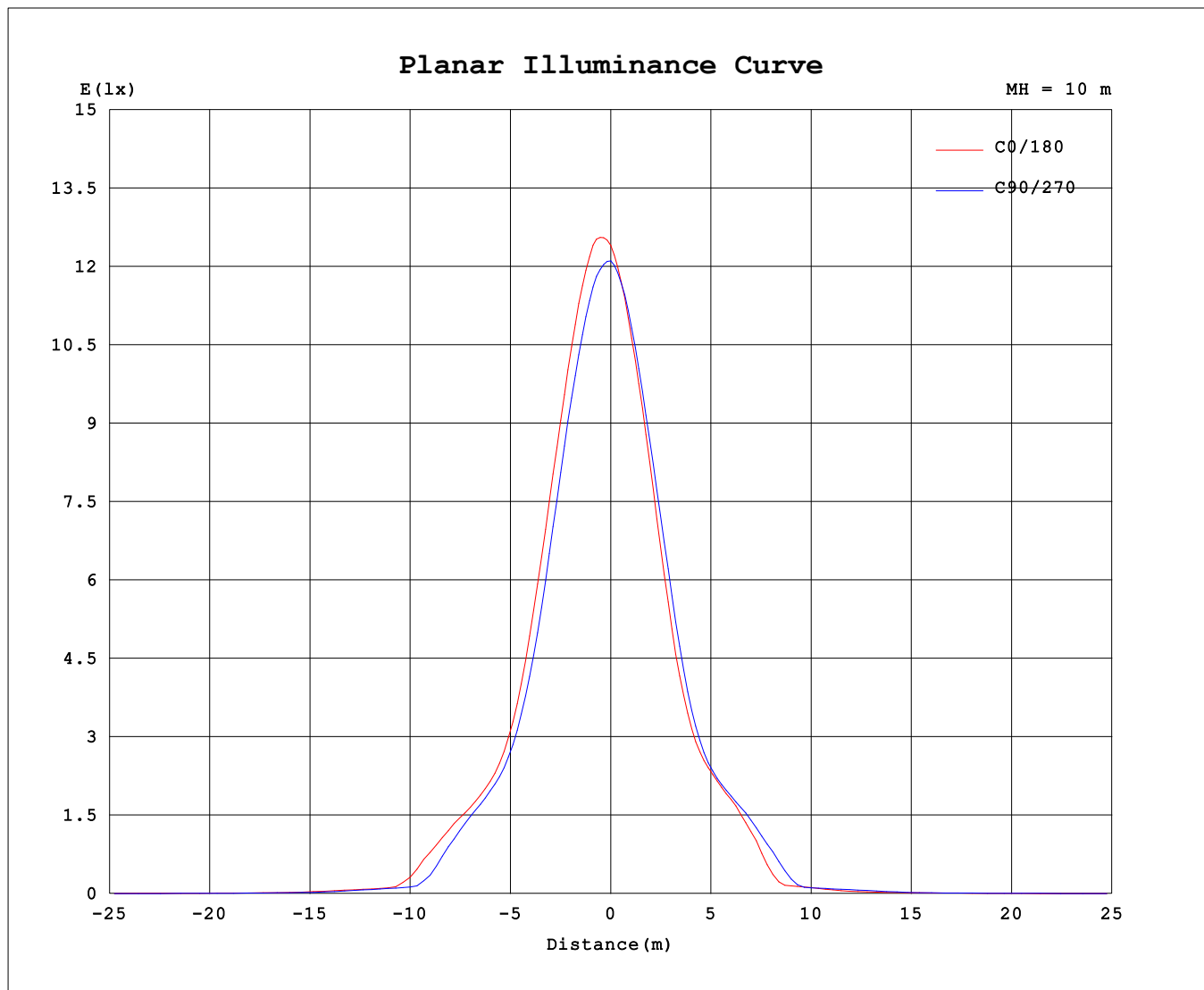
AvgL	cd/m2
L_0~180 (65) av	61487
L_0~180 (75) av	28893
L_0~180 (85) av	10685
L_90~270 (65) av	63146
L_90~270 (75) av	27112
L_90~270 (85) av	19233
L_45 (65) av	62184
L_45 (75) av	25742
L_45 (85) av	12712

Standard: GB/T 29293-2012

C Range: 0 - 360DEG  
C Interval: 22.5DEG  
Test Speed: HIGH  
Temperature:25.3℃  
Operators:Lihong yun  
Test Date:2023-02-08

γ Range: 0 - 180DEG  
γ Interval: 1.0DEG  
Test System:EVERFINE GO-2000B\_V1 SYSTEM V2.00.456  
Humidity:65.0%  
Test Distance:7.580m [K=1.0000]  
Remarks:

## Planar Illuminance Curve



C Range: 0 - 360DEG  
C Interval: 22.5DEG  
Test Speed: HIGH  
Temperature: 25.3 °C  
Operators: Lihong yun  
Test Date: 2023-02-08

γ Range: 0 - 180DEG  
γ Interval: 1.0DEG  
Test System: EVERFINE GO-2000B\_V1 SYSTEM V2.00.456  
Humidity: 65.0%  
Test Distance: 7.580m [K=1.0000]  
Remarks:

## LUMINOUS DISTRIBUTION INTENSITY DATA

Test:U:220.53V I:0.0552A P:11.588W PF:0.9513 Freq:49.99Hz		
UTHDi:0.00% ITHDi:0.00% KDisp:0 Lamp Flux:743.065x1 lm		
NAME: DL3028 3000K 10W	TYPE:	WEIGHT:
SPEC.:	DIM.:	SERIAL No.:
MFR.: VJC Lighting	SUR.: 64	Shielding Angle:

Table--1

UNIT: cd

C (DEG) γ (DEG)	0	22.5	45	67.5	90	112.5	135	157.5	180	202.5	225	247.5	270	292.5	315	337.5			
0	1215	1215	1215	1215	1215	1215	1215	1215	1215	1215	1215	1215	1215	1215	1215	1215			
5	1229	1228	1215	1202	1179	1153	1126	1107	1092	1088	1098	1110	1133	1154	1179	1208			
10	1117	1127	1109	1082	1042	1004	959	929	901	892	906	925	962	999	1049	1086			
15	929	946	925	894	840	790	732	694	664	654	672	701	749	795	850	891			
20	699	713	691	658	604	555	504	472	448	441	453	474	518	565	622	663			
25	479	491	479	458	422	391	361	346	335	332	337	345	364	388	423	450			
30	348	354	347	338	324	314	301	294	289	288	292	298	306	313	324	336			
35	295	296	290	283	270	255	233	222	212	211	222	236	258	273	283	289			
40	234	231	214	196	161	119	77.2	61.0	49.1	57.4	66.0	97.0	137	175	204	221			
45	86.7	82.3	62.9	41.4	36.7	34.5	28.7	31.6	32.2	31.1	27.2	31.8	32.5	33.6	48.5	69.9			
50	33.7	30.6	26.1	31.5	30.6	27.4	18.4	20.0	17.0	18.7	19.1	26.2	29.6	29.3	26.3	31.2			
55	24.8	24.5	18.7	21.9	17.9	14.4	13.4	12.7	12.2	12.3	13.5	13.7	17.5	20.6	17.7	23.0			
60	13.8	13.8	13.3	12.4	11.5	10.7	9.91	9.53	9.13	9.29	9.96	10.2	11.2	12.0	13.0	13.3			
65	10.3	10.1	9.58	9.12	8.51	7.77	7.10	6.73	6.28	6.50	7.41	7.57	8.57	8.91	9.54	9.87			
70	7.43	6.28	5.79	5.95	5.09	3.90	2.74	2.59	2.48	2.50	2.63	3.13	3.14	4.49	5.21	6.03			
75	3.05	2.39	2.38	2.41	2.31	2.14	1.95	1.83	1.74	1.74	1.80	1.97	2.18	2.28	2.39	2.55			
80	1.46	1.17	1.31	1.50	1.49	1.38	1.21	1.04	0.92	0.96	1.01	1.14	1.30	1.37	1.40	1.54			
85	0.45	0.12	0.43	0.63	0.67	0.57	0.32	0.15	0.15	0.17	0.22	0.31	0.41	0.48	0.44	0.42			
90	0.05	0.04	0.05	0.05	0.05	0.04	0.06	0.03	0.04	0.06	0.04	0.09	0.08	0.11	0.08	0.10			
95	0.04	0.04	0.04	0.05	0.04	0.04	0.04	0.04	0.04	0.04	0.04	0.08	0.08	0.09	0.03	0.06			
100	0.04	0.04	0.03	0.05	0.04	0.05	0.04	0.05	0.06	0.04	0.07	0.05	0.06	0.05	0.04	0.04			
105	0.04	0.06	0.04	0.07	0.05	0.07	0.05	0.08	0.14	0.11	0.13	0.10	0.12	0.08	0.09	0.04			
110	0.05	0.08	0.07	0.11	0.09	0.12	0.10	0.14	0.25	0.23	0.24	0.21	0.22	0.18	0.15	0.11			
115	0.10	0.14	0.13	0.18	0.18	0.22	0.20	0.24	0.39	0.37	0.38	0.35	0.35	0.30	0.27	0.22			
120	0.21	0.24	0.23	0.29	0.29	0.34	0.33	0.37	0.58	0.57	0.57	0.53	0.52	0.45	0.42	0.37			
125	0.34	0.37	0.37	0.42	0.43	0.48	0.49	0.54	0.84	0.82	0.82	0.77	0.75	0.67	0.62	0.56			
130	0.51	0.54	0.53	0.60	0.62	0.68	0.70	0.76	1.18	1.17	1.16	1.10	1.05	0.95	0.89	0.82			
135	0.73	0.75	0.74	0.82	0.85	0.92	0.97	1.03	1.60	1.58	1.57	1.50	1.44	1.33	1.25	1.17			
140	1.01	1.02	1.04	1.10	1.14	1.24	1.30	1.38	2.05	2.04	2.02	1.94	1.87	1.76	1.67	1.58			
145	1.35	1.36	1.38	1.45	1.52	1.62	1.68	1.78	2.50	2.48	2.46	2.39	2.33	2.20	2.11	2.02			
150	1.75	1.76	1.76	1.85	1.93	2.02	2.09	2.20	2.91	2.87	2.86	2.79	2.75	2.62	2.55	2.46			
155	2.14	2.15	2.16	2.25	2.32	2.41	2.48	2.58	3.21	3.17	3.16	3.10	3.07	2.96	2.90	2.83			
160	2.52	2.54	2.56	2.66	2.72	2.81	2.86	2.94	3.44	3.40	3.41	3.34	3.33	3.23	3.19	3.11			
165	2.87	2.91	2.92	3.02	3.04	3.12	3.13	3.19	3.53	3.51	3.51	3.47	3.48	3.41	3.39	3.34			
170	3.11	3.15	3.15	3.24	3.23	3.28	3.27	3.34	3.52	3.52	3.51	3.48	3.47	3.46	3.47	3.43			
175	3.29	3.35	3.35	3.40	3.35	3.40	3.41	3.44	3.50	3.51	3.52	3.47	3.48	3.47	3.50	3.45			
180	3.46	3.49	3.50	3.49	3.45	3.47	3.49	3.49	3.50	3.49	3.51	3.47	3.48	3.47	3.51	3.46			

C Range: 0 - 360DEG

C Interval: 22.5DEG

Test Speed: HIGH

Temperature:25.3℃

Operators:Lihong yun

Test Date:2023-02-08

γ Range: 0 - 180DEG

γ Interval: 1.0DEG

Test System:EVERFINE GO-2000B\_V1 SYSTEM V2.00.456

Humidity:65.0%

Test Distance:7.580m [K=1.0000]

Remarks: